



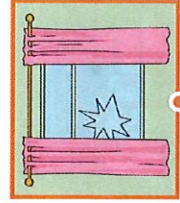
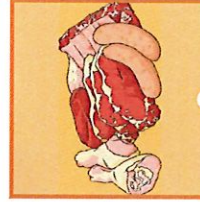
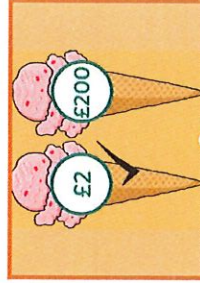
## Words ending in -able

### Week 1

Tick the columns as you follow the instructions from left to right. Make sure you spell the words in the 'write' column. If you spell the word incorrectly, write it again in the 'correction' column.

|             | Look | Say | Cover | Write | Check | Correction |
|-------------|------|-----|-------|-------|-------|------------|
| comfortable |      |     |       |       |       |            |
| reasonable  |      |     |       |       |       |            |
| perishable  |      |     |       |       |       |            |
| breakable   |      |     |       |       |       |            |
| fashionable |      |     |       |       |       |            |

Now that you know your spellings, can you match them with the correct picture?



## Other Ways to Help You Learn Your Spellings

### Bubble Letters

Write your spelling words using bubble lettering and then colour them in.

**s p e l l**

### Speed Write

How many times can you write each of your spelling words in 30 seconds?

### Word Scramble

Ask a friend or grown-up to scramble all of the letters in each of your spellings. Can you work out each anagram?

### Spelling Story

Can you write a passage of text that contains all ten of your spelling words? It's not as easy as you think!

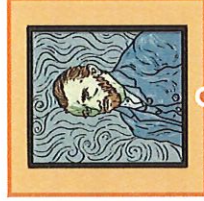
## Words ending in -able

### Week 2

Tick the columns as you follow the instructions from left to right. Make sure you spell the words in the 'write' column. If you spell the word incorrectly, write it again in the 'correction' column.

|                   | Look | Say | Cover | Write | Check | Correction |
|-------------------|------|-----|-------|-------|-------|------------|
| <b>adorable</b>   |      |     |       |       |       |            |
| <b>valuable</b>   |      |     |       |       |       |            |
| <b>advisable</b>  |      |     |       |       |       |            |
| <b>believable</b> |      |     |       |       |       |            |
| <b>desirable</b>  |      |     |       |       |       |            |

Now that you know your spellings, can you match them with the correct picture?



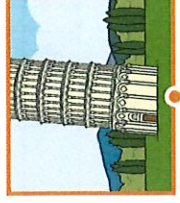
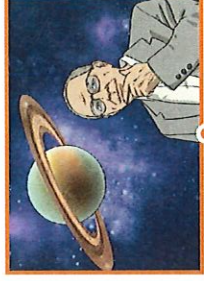
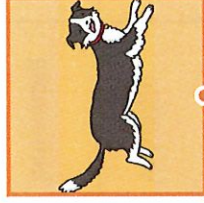
## Words ending in -able

### Week 2

Tick the columns as you follow the instructions from left to right. Make sure you spell the words in the 'write' column. If you spell the word incorrectly, write it again in the 'correction' column.

|                      | Look | Say | Cover | Write | Check | Correction |
|----------------------|------|-----|-------|-------|-------|------------|
| <b>excitable</b>     |      |     |       |       |       |            |
| <b>knowledgeable</b> |      |     |       |       |       |            |
| <b>likeable</b>      |      |     |       |       |       |            |
| <b>changeable</b>    |      |     |       |       |       |            |
| <b>noticeable</b>    |      |     |       |       |       |            |

Now that you know your spellings, can you match them with the correct picture?



# Other Ways to Help You Learn Your Spellings

## Bubble Letters

Write your spelling words using bubble lettering and then colour them in.

**spell**

## Speed Write

How many times can you write each of your spelling words in 30 seconds?

## Word Scramble

Ask a friend or grown-up to scramble all of the letters in each of your spellings. Can you work out each anagram?

## Spelling Story

Can you write a passage of text that contains all ten of your spelling words? It's not as easy as you think!

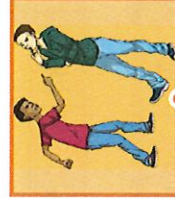
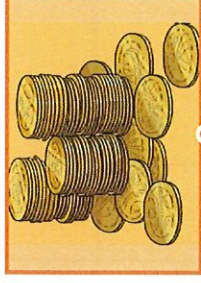
# Words ending in -ably

## Week 3

Tick the columns as you follow the instructions from left to right. Make sure you spell the words in the 'write' column. If you spell the word incorrectly, write it again in the 'correction' column.

|              | Look | Say | Cover | Write | Check | Correction |
|--------------|------|-----|-------|-------|-------|------------|
| adorably     |      |     |       |       |       |            |
| valuably     |      |     |       |       |       |            |
| believably   |      |     |       |       |       |            |
| considerably |      |     |       |       |       |            |
| tolerably    |      |     |       |       |       |            |

Now that you know your spellings, can you match them with the correct picture?



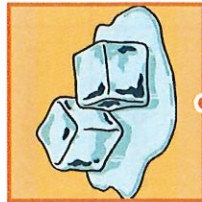
## Words ending in -ably

### Week 3

Tick the columns as you follow the instructions from left to right. Make sure you spell the words in the 'write' column. If you spell the word incorrectly, write it again in the 'correction' column.

|             | Look | Say | Cover | Write | Check | Correction |
|-------------|------|-----|-------|-------|-------|------------|
| changeably  |      |     |       |       |       |            |
| noticeably  |      |     |       |       |       |            |
| dependably  |      |     |       |       |       |            |
| comfortably |      |     |       |       |       |            |
| reasonably  |      |     |       |       |       |            |

Now that you know your spellings, can you match them with the correct picture?



## Other Ways to Help You Learn Your Spellings

### Bubble Letters

Write your spelling words using bubble lettering and then colour them in.

**spell**

### Speed Write

How many times can you write each of your spelling words in 30 seconds?

### Word Scramble

Ask a friend or grown-up to scramble all of the letters in each of your spellings. Can you work out each anagram?

### Spelling Story

Can you write a passage of text that contains all ten of your spelling words? It's not as easy as you think!

Word families based on common words, showing how words are related in form and meaning

Week 4

Tick the columns as you follow the instructions from left to right. Make sure you spell the words in the 'write' column. If you spell the word incorrectly, write it again in the 'correction' column.

|             | Look | Say | Cover | Write | Check | Correction |
|-------------|------|-----|-------|-------|-------|------------|
| temperature |      |     |       |       |       |            |
| temper      |      |     |       |       |       |            |
| temperament |      |     |       |       |       |            |
| tempered    |      |     |       |       |       |            |
| variety     |      |     |       |       |       |            |
| vary        |      |     |       |       |       |            |
| variation   |      |     |       |       |       |            |
| varied      |      |     |       |       |       |            |
| variable    |      |     |       |       |       |            |
| variance    |      |     |       |       |       |            |

Other Ways to Help You Learn Your Spellings

**Bubble Letters**

Write your spelling words using bubble lettering and then colour them in.

**s p e l l**

**Speed Write**

How many times can you write each of your spelling words in 30 seconds?

**Word Scramble**

Ask a friend or grown-up to scramble all of the letters in each of your spellings. Can you work out each anagram?

**Spelling Story**

Can you write a passage of text that contains all ten of your spelling words? It's not as easy as you think!

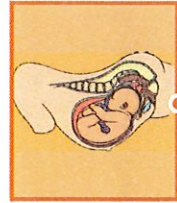
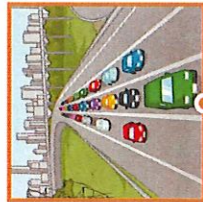
**Word families based on common words, showing how words are related in form and meaning**

**Week 5**

Tick the columns as you follow the instructions from left to right. Make sure you spell the words in the 'write' column. If you spell the word incorrectly, write it again in the 'correction' column.

|                   | Look | Say | Cover | Write | Check | Correction |
|-------------------|------|-----|-------|-------|-------|------------|
| <b>suggest</b>    |      |     |       |       |       |            |
| <b>digest</b>     |      |     |       |       |       |            |
| <b>congestion</b> |      |     |       |       |       |            |
| <b>gesture</b>    |      |     |       |       |       |            |
| <b>gestation</b>  |      |     |       |       |       |            |

Now that you know your spellings, can you match them with the correct picture?



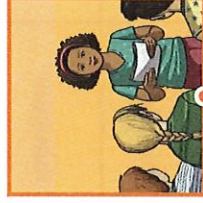
**Word families based on common words, showing how words are related in form and meaning**

**Week 5**

Tick the columns as you follow the instructions from left to right. Make sure you spell the words in the 'write' column. If you spell the word incorrectly, write it again in the 'correction' column.

|                  | Look | Say | Cover | Write | Check | Correction |
|------------------|------|-----|-------|-------|-------|------------|
| <b>lightning</b> |      |     |       |       |       |            |
| <b>daylight</b>  |      |     |       |       |       |            |
| <b>enlighten</b> |      |     |       |       |       |            |
| <b>twilight</b>  |      |     |       |       |       |            |
| <b>limelight</b> |      |     |       |       |       |            |

Now that you know your spellings, can you match them with the correct picture?



# Other Ways to Help You Learn Your Spellings

## Bubble Letters

Write your spelling words using bubble lettering and then colour them in.

**spell**

## Speed Write

How many times can you write each of your spelling words in 30 seconds?

## Word Scramble

Ask a friend or grown-up to scramble all of the letters in each of your spellings. Can you work out each anagram?

## Spelling Story

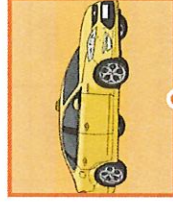
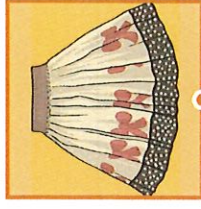
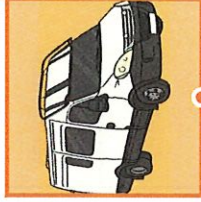
Can you write a passage of text that contains all ten of your spelling words? It's not as easy as you think!

# Creating diminutives using prefixes micro- or mini- Week 6

Tick the columns as you follow the instructions from left to right. Make sure you spell the words in the 'write' column. If you spell the word incorrectly, write it again in the 'correction' column.

|           | Look | Say | Cover | Write | Check | Correction |
|-----------|------|-----|-------|-------|-------|------------|
| minibus   |      |     |       |       |       |            |
| miniskirt |      |     |       |       |       |            |
| minicam   |      |     |       |       |       |            |
| minibeast |      |     |       |       |       |            |
| minicab   |      |     |       |       |       |            |

Now that you know your spellings, can you match them with the correct picture?





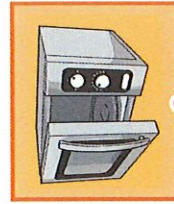
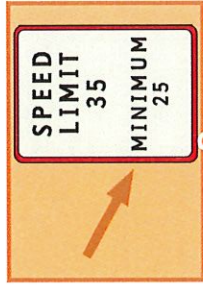
## Creating diminutives using prefixes micro- or mini-

### Week 6

Tick the columns as you follow the instructions from left to right. Make sure you spell the words in the 'write' column. If you spell the word incorrectly, write it again in the 'correction' column.

|            | Look | Say | Cover | Write | Check | Correction |
|------------|------|-----|-------|-------|-------|------------|
| minimum    |      |     |       |       |       |            |
| microscope |      |     |       |       |       |            |
| microchip  |      |     |       |       |       |            |
| microphone |      |     |       |       |       |            |
| microwave  |      |     |       |       |       |            |

Now that you know your spellings, can you match them with the correct picture?



## Other Ways to Help You Learn Your Spellings

### Bubble Letters

Write your spelling words using bubble lettering and then colour them in.

spell

### Speed Write

How many times can you write each of your spelling words in 30 seconds?

### Word Scramble

Ask a friend or grown-up to scramble all of the letters in each of your spellings. Can you work out each anagram?

### Spelling Story

Can you write a passage of text that contains all ten of your spelling words? It's not as easy as you think!

